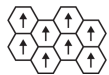


Color Shift Hexagon Tile

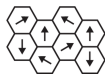
Producttype	Tapijttegel	
Collectie	Configure	
Stijlnummer	5T161	
Uitzicht	Multi-Level Patroon/Cut Loop	
Vezel	Ecosolution Q100™ Nylon	
Verfmethode	100% In Oplossing Geverfd	
Primaire Backing	Synthetisch	
Secundaire Backing	Ecworx® Tegel	
Beschermende Behandelingen	SSP® Shaw Grondbeschermer	
Aanbevolen Kleefstof	LokDots, 3000 Carpet Tile 1 Gallon, 4151 Multi-Use Carpet Tile 4 Gallon, 5000 Carpet Tile 1 Gallon, LokWorx Adhesive Tabs, 3800 Indoor Outdoor Carpet Tile 4 Gallon, 5000 Carpet Tile 4 Gallon or 3000 Carpet Tile 4 Gallon	
	u.s.	metric
Productformaat	28.8 in x 24.9 in	73.2 cm x 63.2 cm
Oppervlakte Per Doos	44.89 ft²	4.17 m²
Stuks Per Doos	12 pcs	
Meter	1/12 in	47.2 per 10 cm
Steken	9.0 per in	35.0 per 10 cm
Gemiddelde Dichtheid	10065 oz/yd³	0.372 g/cm³
Kilotex		15.07
Totale Dikte	0.244 in	6.2 mm
Getuft Gewicht	26 oz/yd²	881.5 g/m²



Aanbevolen Installatiemethode



Monolithic



Random



Diagonal

Gegevens + Testen

Stralingspaneel (Astm E648)	Class I
Nbs-rook	Less Than 450
Elektrostatische Weerstand	Less Than 3.5 kv
Cri Groen Label Plus (Glp)	GLP9968
Pooltest	Pass*
Ada Compliance	>0.6, Voldoet aan de aanbevolen statische wrijvingscoëfficiënt voor ADA-loopvlakken en toegankelijke routes***

Test Reports may be included or listed by the manufacturing/inventory style number as opposed to the noted selling style number.

Garanties

[Levenslang Commercieel Beperkt](#)

Coördinerende Producten

Carpet Tile: **Plane Hexagon Tile, Base Hexagon Tile, Contact Hexagon Tile**

Kenmerken + Certificeringen

Certifications Below Apply Exclusively To The Carpet Tile Rug Itself And Not The Lokworx Tabs Adhesive

Cradle to Cradle gecertificeerd™

Health Product Declaration (HPD)

Environmental Product Declaration (EPD)

Embodied Carbon (Cradle to Gate)

Life-Cycle Carbon Emissions

Living Building Challenge (LBC)

Verklaar

nsf 140

CRI Green Label Plus (GLP)

Singapore Green Label

CE-markering (EN 14041)

milieugarantie

totaal gerecycleerde inhoud

productverpakking

land van herkomst

Groen Leed Bijdragekrediet

"MR-krediet: openbaarmaking en optimalisering van bouwproducten
Milieuproductverklaringen - Optie 1: Milieuproductverklaring (EPD)"

"MR-krediet: Openbaarmaking en optimalisering van bouwproducten
Materiaalingrediënten - Optie 1: Rapportage materiaalingrediënten"

"MR-krediet: openbaarmaking en optimalisering van bouwproducten
Materiaalingrediënten - Optie 2: Optimalisering van materiaalingrediënten"

MR Credit: Building Product Disclosure and Optimization
Sourcing of Raw Materials - Option 2: Leadership Extraction Practices

"EQ-krediet: materialen met lage emissie Optie 1: Berekeningen per
productcategorie"

MR Credit: Interiors Life-Cycle Impact Reduction
Option 3: Design for Flexibility

Silver Level (Version 4.0)

1.000 ppm Gerapporteerd

3de Partij Gecertificeerd in Overeenstemming Met ISO14044, ISO14025
& EN15804

5.1 kg CO₂/m²

Low Embodied Carbon

Vrij Van Chemische Producten Die Op De Rode Lijst Staan

Voldoet Aan LBC

Goud

GLP9968

Gecertificeerd

3de Partij Gecertificeerd

Re[turn] Reclamation Program* | Through Our Environmental
Guarantee, Shaw Pledges to Transport And Recycle Any Ecoworx
Carpet.

62% (Pre-Consumer 62% | Post-Consumer 0%)

100% Recycleerbaar

Verenigde Staten

3rd Party Certified in Accordance with ISO14044, ISO14025 & EN15804

C2C Silver Level (Version 4.0) or HPD (Version 2.1)

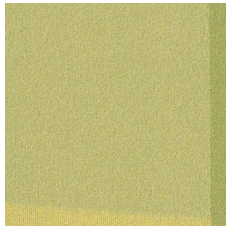
C2C Silver Level (Version 4.0)

Environmental Guarantee: Re[turn] Reclamation Program* | Through
Our Environmental Guarantee, Shaw Pledges to Transport And
Recycle Any Ecoworx Carpet.

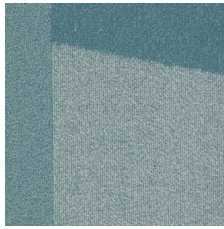
Green Label Plus Certification: GLP9968

Ecoworx Tile with Lokdots Installation System

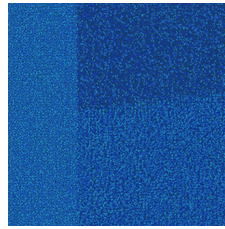
Lichtreflectiewaarde



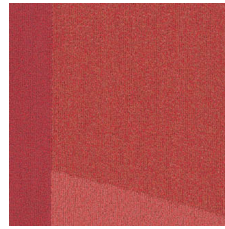
Sublime 59325
LRV 25.8



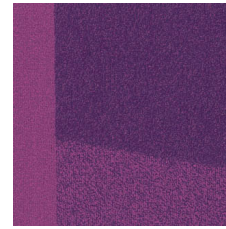
Aerial 59327
LRV 7.8



Electric 59429
LRV 7.2



Social 59615
LRV 8.9



Brilliant 59991
LRV 7

Aanvullende Informatie

* To learn more about the recyclability of our products and our re[TURN], please visit shawcontract.com/sustainability.

**Meets or exceeds all local and national regulations in country of manufacture.

***This carpet is manufactured to be ADA compliant, but to be fully ADA compliant, the end-user must ensure the carpet is adhered to the floor and installed as outlined in the ADA standards.

[Installation Guidelines](#)

[Maintenance Guidelines](#)

Specifications are subject to nominal manufacturing variance. Material supply and/or manufacturing processes may necessitate changes without notice.

This product is an exclusive design and may not be duplicated in any manner. Use of this design in the creation of another product design is also strictly prohibited.

Visit shawcontract.com/testing for more information.



Declare.



PVC-Free

Corporate Headquarters +1 800 257 7429 | +1 706 532 7984 | Atlanta +1 404 853 7429 | Bengaluru +91 80 6773 0202 | Beijing +86 10 6568 588 | Chicago +1 312 467 1331 | Dubai +971 4 584 6956 | Hong Kong +852 2623 0371 | Latin America (Miami) +1 305 827 5912 | London +44 207 961 4120 | Los Angeles +1 800 233 1614 | Melbourne +61 3 9939 8543 | Mexico City +55 5010 7600 | Mumbai +91 22 6284 5050 | Nantong +86 400 800 7429 | New York +1 212 953 7429 | Paris +33 (0) 1 81 22 44 39 | San Francisco +1 415 955 1920 | Santiago +562 2431 5000 x 550 | São Paulo +55 11 3071 1702 | Shanghai +86 21 3338 4000 | Singapore +65 6733 1811 | Sydney +1 800 556 302